

resource members about events projects

ebuki

Earth Building UK & Ireland: Fostering the development of earth building - [Registered charity](#) - [Get Involved](#) - [Media](#)

Facebook Tweet

DONATE

## Earth Build Europe 2021, Friday 7th May.

### Booking:

Book your place on [Earth Build Europe 2021](#), starts 8:45am (London) 9:45am (Paris), doors open 15 minutes earlier.

### Preparation:

Attendees: Get help with the [conference software](#). Speakers: See our [guide for film makers](#).

### Introduction:

Europe's earth building heritage came under sustained attack in the 20th century. Slowly our earthen heritage is rediscovering its place as a key contributor to the built environment. Happily Europe is currently experiencing a rapid growth in skills, knowledge, competence, experience, research and regulation, but it is also experiencing cultural resistance, climate crisis and network challenges.

Earth Build Europe [\[f\]](#) offers ways to understand the threads of these multiple challenges and in this event we discuss how they weave together and how they can be enlivened, strengthened and grown. We are blending voices from Organisations, Industry and the Digital World, bridging the gaps between different disciplines and actors, skills and knowledge, users and producers, designers and practitioners, regulators and funders and the wider, seemingly indifferent, society.

### How the event works:

The hosts will lead three conversations, each featuring three or four 15 minute presentations by our key speakers. During the presentations attendees can pose questions which are addressed in the three Q&A sessions. Our engaging speakers, all known outside their own countries, will lead the Q&A with the conversation host. There are no expectations that we will find answers to all the questions but we do aim to stimulate a good discussion. Between each conversation we have an opportunity to share short films from across the continent and beyond sharing new knowledge, earth projects old, new, under construction and upcoming earth events.

**POST EVENT NOTE:** Please find the recorded presentation via the video icons [▶](#) where available.

### 09:00 CONVERSATION 1: How do we grow our earth building network? [▶](#)

Opening remarks with your host Rowland Keable, EBUKI.

[About the host...](#)



### The natural building knowledge network [▶](#)

Oliver Swann, Natural Homes

When our vernacular heritage was built, material choices were drawn exclusively from a pool of natural materials put together by highly skilled, lifelong artisans. Contemporary building is standardised with much of the knowledge placed in the hands of the material manufacturers. I believe if earthen and other natural building models are to thrive, the natural building 'community' must cooperate to become an 'industry' by re-establishing its vernacular heritage using contemporary knowledge networks.

[About the speaker...](#)



### Where can European collaboration take us? [▶](#)

Lydie Didier, Asterre





I am going to talk about who I am to answer that question, about the net and the work that it ta to have one, about where we stand today depending on where we are looking from. I'm going ask everyone else to start answering the question. There are many possible answers, and they depend upon our compass and our choices: I am going to talk about the engine-nearing optior and the warm data option(s), and about the part(s) that we cannot foresee. Earth Build Europe prompt, not a past tense, come and build with us.

[About the speaker...](#)



### Potential alliances across the eco-build sector ▶

Herbert Gruber, ASBA



Many alliances between European organisations have existed since 2008, especially in prepar European ECVET Training. Since 2015 the European Straw Building Association (ESBA) has 1 to focus their common forces on communication and dissemination, supported by the results o other European or Interreg projects like UP STRAW. Herbert talks here about the arduous patt joining forces and mediating between organisations, about setbacks and successes in dealing individualists, as can be found not only in Europe's green parties but also in the committed nor profit organisations in the field of sustainable building.

[About the speaker...](#)



### Long lasting, robust earth building networks: What's the secret? ▶

Maria Brown, ESTEPA



Earth building networks exist around the world well before Earth Build Europe (EBE) came to l Let us find out what is similar and what different, let us learn from each other. Different socio-cultural backgrounds trigger different ways of turning ideas into facts, throughout the years and spite of global challenges.

[About the speaker...](#)



## Q&A Session No.1

10:20 - 10:50 ▶



### Video & Networking Break from 10:50 - 11:40

Short films about new publications, books, research reports, web resources etc. Send us yours by the end of April. Films should not exceed 3 minutes. See our [technical support](#).

### 11:40 CONVERSATION 2: Climate Crisis - is our response enough? ▶



Opening remarks with your host Louise Halestrap, EBUKI & CAT.



Earth's potential to de-carbonise construction ▶

Peter Walker, University of Bath



The built environment is responsible around 40% of global greenhouse emissions and consumes around 40% of all raw materials. This is simply not sustainable. Alternatives to current practice urgently needed. This presentation will explore the role earth building materials can play in reducing the wider impact of construction. The presentation draws on nearly 30 years experience working with earth construction materials.

[About the speaker...](#)



Will Environmental Product Declarations have significant impact? ▶

Horst Schroeder, Dachverband Lehm



LCA/EPD are methods to quantify inputs (energy consumption) and outputs (CO2 emissions) of a production system on the basis of standardized procedures. Using these instruments, a quantification and objective comparison of inputs / outputs in earth material production with other mineral building products is possible. The EPD system enables a more precise definition of production processes of earth building materials. On this basis, EPD can contribute to a reduction of CO2 emissions.

[About the speaker...](#)



Can industry and the market outcompete carbon-tech? ▶

Ulrich Röhlen, CLAYTECH



The inherently low environmental footprint of clay-earth products is often superior to that of the carbon-tech products available on the market. Other mineral-based building materials may have greater application potential than clay-earth but these products have a high environmental cost. The production methods require many more resources, or a great deal of heat and energy is expended in building with these products. They are therefore in many cases "environmentally oversized". Earthen-clay products, on the other hand, are proportionally much better suited. Their low energy cost necessary for their production and processing, as well as their reusability, contribute to this. This lecture will give a short overview of the clay-earth products and systems offered by the company CLAYTEC which is used extensively in German earthen-clay building.

[About the speaker...](#)



Q&A Session No.2

12:45 - 13:15 ▶



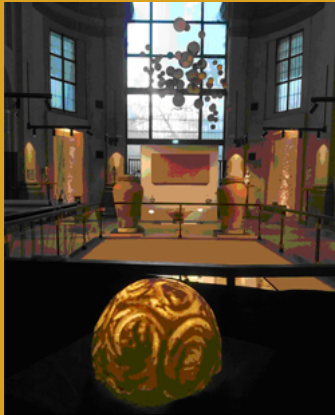


## Video & Networking Break from 13:15 - 14:05

Short filmed tours of buildings, collaborations etc. Send us yours by the end of April. See our [technical support](#).

### 14:05 CONVERSATION 3: How is the culture of earth building evolving? ▶

Opening remarks with your host Tom Morton, EBUKI.



#### Earth, a global cultural dialogue ▶

Sergio Sabbadini, ANAB & Terra Migaki Design



In recent decades, clay architecture has seen a strong evolution. Yet the industrial design sector still embryonic. Terra Migaki Design has brought together professionals from different disciplines to develop this area through specific research, international competitions, workshops and exhibitions. The use of 3D printers with clay mixes, the development of technologies and compounds, the use of "Industrial Clay", the enhancement of earth's performance in particular products and, finally, the use of clay in countless areas of experimentation. These experiences show how the world of designers and clay experts needs greater synergies. For this reason, the transmission of skills at an international and interdisciplinary level plays an important role.

[About the speaker...](#)



#### Are aesthetics a useful driver for designers? ▶

Stephan Jörchel, Dachverband Lehm



The role of Architects and Engineers in our construction culture – why do aesthetics matter and does what architects think affect our built world. Can we shift values in design to deliver a better architectural culture? How to connect the design approach with other reasons for earth building: functional and ecological aspects?

[About the speaker...](#)



#### Heritage or brave new traditions? ▶

Hildigunnur Sverrisdóttir, Iceland University of Arts



Almost a century ago, in his novel *A brave new world*, writer and critic Aldous Huxley warned against blindly and religiously adopting modernist ways. A century later, life in the world is reaching a certain turning point – or probably a point of no return – facing a dystopia result of the western modernist thought regime of technical development and precision, quantification and organisation but also rationality, mass production, extortion. In Huxley's novel, the protagonist meets a young man who is neither of the old times, nor of the new times. He has learned all he knows from two books, a scientific manual and the works of Shakespeare, reflecting what is probably a common feeling of many, on the one hand there are catalogues and excel sheets minutely describing the details of everything, to the point that it has no meaning anymore, and on the other we have a somewhat romantic and (over-) dramatized (dis-) connection to our outer and inner nature.

Methods have to be changed and returning to natural materials and artisanal methods might provide us with guidance towards a more sustainable future, to be sure. In this talk I will speculate

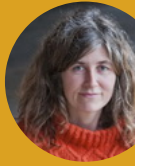
on what the traditional Icelandic turf house might be able to teach us and thus contribute to our future ways of living in the world.

[About the speaker...](#)



### Using earth building to reaffirm our humanity ▶

Becky Little, Rebeearth



Creating with earth is all about relationships, with people and place, with the past and with nature. When we work with soil in our hands we become immersed in a sensory experience rooted in time and place, that also reminds us where we came from and where we will end up. Working together we can harness community and connection, empowerment and belonging. Responding to diverse local materials and climates, with wisdom and ingenuity, we recognise that earth is not a commodity or resource, but something we borrow and recycle, so that others, human or other, may thrive in our presence and in our passing.

[About the speaker...](#)



### Q&A Session No.3

15:40 - 16:10



### Video & Networking Break from 16:10 - 17:00

Short presentations on upcoming earth events. Send us yours by the end of April. See our [technical support](#).

Earth Build Europe Closing Comments 17:00 - 17:30 ▶ followed by Networking until 20:00

# Earth Build Europe 2021

is brought to you in cooperation with





EBUKI are a registered charity, please use responsibly

